



POLITICAL ACTION COMMITTEES OF THE NATIONAL MINING ASSOCIATION
101 CONSTITUTION AVENUE N.W., SUITE 500 EAST, WASHINGTON, DC 20001 (202) 463-2644

May 3-4, 2022

Dear Friend of MINEPAC and COALPAC,

I want to thank you for considering financially supporting MINEPAC and COALPAC in this essential election year. Each year your contributions to NMA's political action committees help support allies of the mining industry on Capitol Hill and is an essential part of our outreach.

This Congress, the NMA continued advocating for the mining industry in key hearings and legislation on issues addressing new mining permitting and processing, the federal coal leasing program, mining reclamation funding and bonding, and the new ever-increasing demand for mineral production and supplies in the U.S.

Last year's Infrastructure Investment and Jobs Act offered opportunities in which NMA worked with bipartisan members of Congress to reach some important achievements. We included positive steps toward new permitting reforms, new federal financing eligibilities for mineral production and processing, reauthorization of reclamation fees with reforms and rate reductions, and new investments in carbon capture and utilization research, development, and demonstration programs.

Last year's Build Back Better Act offered challenges, but NMA also worked with bipartisan members of Congress to defeat anti-mining provisions which would impose punitive royalties, new severance and rental fees, dirt taxes, damaging changes to mining regulations and lease renewals, and new mineral withdrawals which would have cost the industry over \$850 million annually. This year, NMA has continued to work to build bipartisan relationships on Capitol Hill and defend the industry against punitive new costs and taxes and advocate for key bipartisan permitting reforms, investments in reclamation, and policies to ensure reliable electricity generation.

MINEPAC and COALPAC allow us to directly support our allies and ensure that pro-mining officials are elected to Congress. This year, we hope to use MINEPAC and COALPAC to further amplify the mining industry's united voice on Capitol Hill. We contributed \$220,000 through direct contributions and events hosted with NMA member companies to key mining allies in Congress last year. With your help we can reach that amount of support for mining allies on Capitol Hill this year and even more.

To support the NMA PACs this election year, we ask that you:

1. Consider a contribution from your PAC to MINEPAC or COALPAC this year. The maximum contribution each year is \$5,000.
2. Provide NMA with a list of authorized company personnel - including titles and email addresses - NMA may solicit for contributions to NMA's PACs. Before doing so, please fill out our online Authorization form [here](#). We have also included a hard copy in this packet for your convenience.
3. Consider personally contributing to NMA's PACs.

With our online contribution platform, it has never been easier to contribute. You can access the contribution page for MINEPAC [here](#) and the contribution page for COALPAC [here](#). The instructions to make an online contribution can be found at the end of this packet. We have also included a hard copy of our Contribution Form for your convenience.

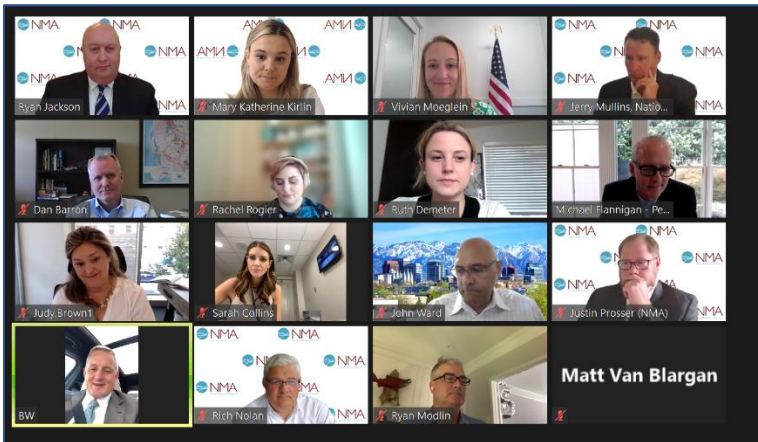
If you have any questions, please do not hesitate to contact me directly at rjackson@nma.org (202) 463-2625 or MK Kirlin at mkirlin@nma.org or (202) 463-2641.

Thank you in advance for your generous contributions and continued support of MINEPAC and COALPAC!

Sincerely,



Ryan Jackson
MINEPAC & COALPAC Treasurer
Senior Vice President, Government & Political Affairs



Screenshots from NMA hosted virtual fundraisers for Sen. Crapo (R-ID) and Rep. Westerman (R-AR)



NMA President & CEO Rich Nolan at NMA hosted fundraisers for Sen. Murkowski (R-AK) and Rep. Stauber (R-MN)



2022 Contributor Spotlight

Thank you for your continued support!

Maximum Giving - \$5,000 Annually

Rich Nolan, *National Mining Association*
Richard C. Adkerson, *Freeport-McMoRan, Inc.*
Ryan Jackson, *National Mining Association*
Michael Kendrick, *Freeport-McMoRan, Inc.*
Alliance Coal, LLC Political Action Committee

Arch Resources, Inc. Political Action Committee
CONSOL Energy, Inc. Political Action Committee
Drummond Company, Inc. Political Action Committee

Principal Giving - \$1,000 + Annually

Tawny Bridgeford, *National Mining Association*
Ashley Burke, *National Mining Association*
Stephen Higgins, *Freeport-McMoRan, Inc.*
Scott Jarboe, *Peabody Energy Corporation*
Michael W. McLanahan, *McLanahan Corporation*
Jerry Mullins, *National Mining Association*

J.J. Ong, *Freeport-McMoRan, Inc.*
Justin Prosser, *National Mining Association*
Katie Sweeney, *National Mining Association*
John Ward, *John Ward, Inc.*
J.R. Simplot Company Political Action Committee

Foundational Giving - \$500 + Annually

Conor Bernstein, *National Mining Association*
Leslie Coleman, *National Mining Association*
Bill Harris, *Freeport-McMoRan, Inc.*
Catherine Krill, *National Mining Association*
Lee Lemke, *Georgia Mining Association*

Pam Masson, *Freeport-McMoRan, Inc.*
Matthew Nugen, *Peabody Energy Corporation*
Bertrand Odinet, *Freeport-McMoRan, Inc.*
Roger Roberts, *National Mining Association*
Loralie Simon, *Usibelli Coal Mine*





MINEPAC and COALPAC in Action



Sen. Cortez Masto (D-NV)



Rep. Johnson (R-OH)



Sen. Murkowski (R-AK)



Rep. Simpson (R-ID)



Sen. Manchin (D-WV)



Rep. Stauber (R-MN)



Rep. McMorris Rodgers (R-WA)



Rep. Westerman (R-AR)

NMA's Hosted Events in 2021, 2022 and Results

- April 26, 2021, **Senator Joe Manchin**, Chairman, Senate Energy and Natural Resources Committee - \$40,000
- May 13, 2021, **Congresswoman Liz Cheney** - \$30,000
- June 9, 2021, **Senator Mike Crapo**, Ranking Member, Senate Finance Committee - \$21,000
- June 14, 2021, **Congressman Bruce Westerman**, Ranking Member, House Natural Resources Committee - \$15,000
- June 15, 2021, OH Congressional Candidate **Mike Carey**, (now Congressman and former NMA company representative) - \$20,000
- June 28, 2021, **Senator Catherine Cortez Masto**, Chairwoman, Senate Public Lands, Forestry, and Mining Subcommittee - \$21,000
- July 20, 2021, **Congressman Pete Stauber**, Ranking Member, House Energy and Minerals Subcommittee - \$20,000
- April 4, 2022, **Congressman Bill Johnson** Senior member, House Energy and Commerce Committee - \$15,000
- April 27, 2022, **Senator Lisa Murkowski** Ranking Member, Senate Interior Appropriations Subcommittee - \$25,000

NMA's PACs have made over \$100,000 in direct contributions to bipartisan allies in Congress this cycle which also include Rep. Steny Hoyer, Sen. John Barrasso, Rep. Steven Horsford, Rep. Mark Amodei, Rep. Susie Lee, Rep. David McKinley and Rep. Carol Miller.

Combined with hosted events and your contributions, NMA contributed a total of \$222,000 to Congressional allies in 2021. So far in 2022, NMA has supported over sixteen Congressional allies and will continue to support more thanks to your generous contributions.



Please return to:

National Mining Association

101 Constitution Avenue, NW Suite 500 East

Washington, DC 20001

Or Scan and email to mkirlin@nma.org

NMA PAC AUTHORIZATION & CONTRIBUTION FORM

(An online version of the Authorization Form is also available [here](#).)

I approve the solicitation of financial contributions for NMA's political action committees from myself and/or other representatives of my company that I may designate for the calendar year(s) listed below. This authorization may be rescinded at any time. I understand that, in any calendar year, authorization may be given to only one federal PAC affiliated with a national trade association. Please check the boxes below for the year(s) you would like to authorize.

☐ 2022 ☐ 2023 ☐ 2024 ☐ 2025

Your Authorizing Signature _____

The following section is required if you completed the above section and/or are making a contribution:

Company _____ Date _____

Address _____ City/State/Zip _____

Name _____ Title _____

Phone _____ E-mail _____

Yes, I want to help strengthen the mining industry's voice in Washington. Here is my Contribution to MINEPAC and COALPAC. (Please circle one or both)

\$5,000 \$3,000 \$2,000 \$1,000 \$500 Other

a) Enclosed is my personal check of \$ _____

b) Please charge my personal credit card: ____ VISA ____ MasterCard ____ AMEX (Federal law does not allow use of corporate cards)

Card Number _____ Security Code _____ Expiration Date _____

Name on Card _____ Billing Address _____

Signature _____

MINEPAC/COALPAC

National Mining Association

101 Constitution Avenue, N.W. Suite 500 East

Washington, D.C. 20001

Federal law requires us to use our best efforts to report the name, mailing address, occupation and name of employer of individuals whose contributions exceed \$200 in a calendar year. Corporate contributions are prohibited by federal law. Contributions to COALPAC and/or MINEPAC are for political purposes. Only U.S. citizens and permanent residents can contribute to federal PACs. Participation is strictly voluntary. You may refuse to contribute without reprisal. Contributions to COALPAC and/or MINEPAC are not deductible as charitable contributions for federal income tax purposes.



POLITICAL ACTION COMMITTEES OF THE NATIONAL MINING ASSOCIATION
101 CONSTITUTION AVENUE N.W., SUITE 500 EAST, WASHINGTON, DC 20001 (202) 463-2644

PAC Online Contribution Platform

It's never been easier to support MINEPAC and COALPAC. Using our new online contribution platform, you can donate in just a few quick steps. Managerial personnel and board members from NMA member companies can submit contributions online, and this instruction packet will walk you through the steps to do so. But first, there are a few items to address:

1. If you are the executive or primary NMA contact for your company, please complete the [Solicitation Authorization Form](#) if you have not done so already. (Please note: this form must be completed before we are able to solicit contributions from your company's employees).
2. If you are not an executive or primary NMA contact for your company, you can click [here](#) to access the contribution page for MINEPAC and [here](#) to access the contribution page for COALPAC. (You may contribute to both, but combined contributions cannot exceed \$5,000 per year).
3. If individuals who are authorized to contribute do not have an NMA login, they can still contribute online. Just copy and paste the secure URL for the Donations page into an email to them. This will allow them to access the donation page directly.
4. We will not share this or any other information outside of our required FEC filings.
5. If you would like more information, please visit our [FAQs page](#).

Online Donation Instructions

You're just a few steps away from making your voice heard on the Hill

1. Visit <https://nma.org/pac/> and **SIGN IN!**



2. Select the PAC you would like to contribute to

You can help advance our mission by supporting MINEPAC and COALPAC, ensuring that our industry's voice is well represented.

Click on the logo of the PAC you would like to support:



Federal law requires us to report the name, mailing address, occupation and name of employer of individuals whose contributions exceed \$200 in a calendar year. Corporate contributions are prohibited by federal law. Contributions to COALPAC or MINEPAC are for political purposes. Participation is strictly voluntary, and you may refuse to contribute without reprisal. Only U.S. citizens and permanent residents can contribute to COALPAC or MINEPAC. Contributions are not tax deductible for federal income tax purposes.

3. Fill out the required information on the contribution form

[Homepage](#) | [MINEPAC Donations](#)

MINEPAC Donations



[Use Your DonorID \(optional\)](#)

\$250	\$500	\$1,000
\$2,500	\$5,000	Other

Email * Phone *

Name *

First	Last
-------	------

Address

Street Address *

☐ I am retired

Employer	Occupation
----------	------------

Card Bank Draft PayPal

Card Number		
Exp. Date	CVC	ZIP / Postal

Donate

By accessing this form you agree to the Terms of Service and Privacy Policy.

Secured by Aneidot

*Please remember:

1. You can only contribute a maximum of \$5,000 to a PAC each year. This amount can be split between COALPAC and MINEPAC.

2. You must enter your personal credit card and personal address.

4. Double check your information, hit “Donate,” and you’re done!

Card Bank Draft PayPal

Card Number		
Exp. Date	CVC	ZIP / Postal

Donate

By accessing this form you agree to the Terms of Service and Privacy Policy.

Secured by Aneidot

Federal law requires us to report the name, mailing address, occupation and name of employer of individuals whose contributions exceed \$200 in a calendar year. Corporate contributions are prohibited by federal law. Contributions to COALPAC or MINEPAC are for political purposes. Participation is strictly voluntary, and you may refuse to contribute without reprisal. Only U.S. citizens and permanent residents can contribute to COALPAC or MINEPAC. Contributions are not tax deductible for federal income tax purposes.



Q. What are MINEPAC and COALPAC?

A. MINEPAC and COALPAC are legal nonprofit organizations of National Mining Association members and employees established for the purpose of soliciting, collecting, and disbursing political contributions as a means to support the election of pro-mining candidates to federal elective offices. All contributions are voluntary, and no individual will ever face reprisal or retribution for not participating in MINEPAC or COALPAC.

Q. What is a political action committee?

A. A political action committee is essentially a bank account that gives businesses, trade, and professional associations and labor organizations a way to pool the resources of their members and employees to support candidates for federal elective office. Political action committees were authorized by federal law in the 1970s and virtually all trade, professional, and labor organizations have now created political action committees.

Q. Why does the National Mining Association need MINEPAC and COALPAC?

A. The mining industry needs MINEPAC and COALPAC to compete with powerful interest groups and other organizations that contribute millions of dollars annually to help elect candidates who support harmful regulation of the mining industry and laws that restrict the growth of the mining industry.

Q. Why doesn't the National Mining Association just use its own money to make political contributions?

A. Federal election law prohibits corporate contributions to candidates for the U.S. Senate and House. In addition, the National Mining Association cannot use membership dues or other association revenues to financially support candidates.

Q. What kind of contributions can MINEPAC and COALPAC accept?

A. By law, PACs can accept only personal contributions by eligible individuals to provide financial support to candidates for U.S. Senate and the House of Representatives. In addition, MINEPAC and COALPAC can accept contributions from other Political Action Committees.

Q. Why is MINEPAC and COALPAC important to me?

A. By opting in to learn more about MINEPAC and COALPAC, you can ensure that the National Mining Association is able to help elect candidates who support the mining industry and are committed to removing barriers to growth. Our PACs help grow the mining industry's allies and supporters on Capitol Hill by building relationships with pro-industry candidates, enhancing the visibility of the coal industry on Capitol Hill, promoting awareness of the key industry issues, and educating Congress about the critical role of mining to the U.S. economy.

Q. Why contribute to a PAC instead of giving directly to candidates?

A. Engaging in political activities is vital to the entire mining community. As National Mining Association grows, so does our commitment to ensuring we have a strong and unified voice in Washington. Contributing to a PAC helps leverage the collective resources of hundreds of your colleagues to support our industry's top champions in districts out of your company's footprint.

Q. How much of the contributions are used on overhead?

A. While the National Mining Association cannot legally contribute to candidates, it is allowed to provide the administrative support required to establish and operate a political action committee of its own. Absolutely 100% of contributions to MINEPAC and COALPAC are used for political contributions to mining-friendly candidates.

Q. How much can an individual contribute to a PAC?

A. Federal law permits individuals to contribute up to \$5,000 to a PAC each calendar year. Other corporate and association PACs may also contribute a maximum of \$5,000 to a PAC each calendar year. Contributions can be split between COALPAC and MINEPAC.

Q. Is a PAC contribution deductible on a personal income tax return?

A. No, PAC contributions are not tax deductible as they are considered political contributions.

Q. How often can an individual make contributions?

A. Individuals may contribute as often as they wish, as long as the sum of their contributions does not exceed the \$5,000 limit during any calendar year.

Q. What kind of candidates does MINEPAC and COALPAC support?

A. The National Mining Association and MINEPAC/COALPAC support federal candidates who embrace the mining industry as an economic generator and actively support policy to remove barriers to growth within the industry.

Q. Who decides which candidates to support?

A. MINEPAC and COALPAC staff, in consultation with the PAC steering committee, collectively make the selection of candidates that the PAC supports. MINEPAC and COALPAC donors are invited to suggest candidates for consideration.

Q. I still have questions, who can I contact?

A. For more information, please contact MK Kirlin at mkirlin@nma.org

For information about federal election laws, please visit the Federal Election Commission website at www.fec.gov.